

The image features a dark blue background with a large, light blue geometric shape on the left side. The word "Hardman" is written in a large, bold, white sans-serif font, with a registered trademark symbol (®) to its upper right. Below it, the word "FILTERS" is written in a smaller, all-caps, white sans-serif font. In the lower right area, there are faint white outlines of three rectangular filter housings, each with a trapezoidal top section.

# Hardman<sup>®</sup>

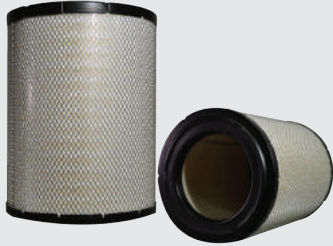
FILTERS

2018

CATÁLOGO DE FILTROS

— LÍNEA PESADA



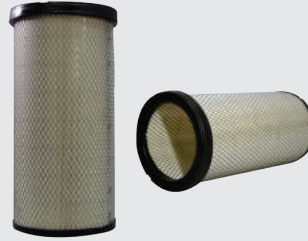


AIRE

16546-9106

OEM:  
16546-9106  
SAKURA A6119M

HINO 700 (MULA)  
NISSAN PKS  
(Sec. SA6120)

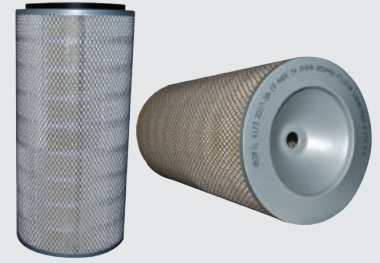


AIRE

16546-Z9101

OEM:  
16546-Z9101  
SAKURA A6120

HINO 700 (MULA)  
NISSAN PKS  
(Prim. SA6119)



AIRE

17720-3640

OEM:  
17720-3640  
SAKURA : A1313

HINO SG GD GH  
(USE FILTRO SEC.  
17801-2460)

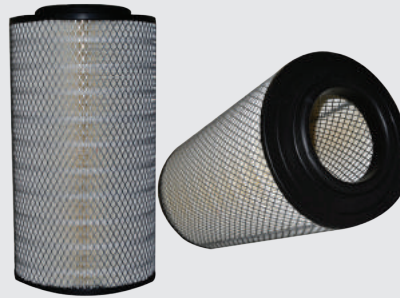


AIRE

17801-2460

OEM:  
17801-2460  
SAKURA 1307

HINO SG GD GH  
(USE FILTRO PRIM.  
17720-3640)



AIRE

17801-3380

OEM:  
17801-3380  
17801-EW010  
SAKURA : A1325

HINO 500 GD / GH  
(2004-->) (Sec.  
SA1330) Air Prim.



AIRE

17801-78020

OEM:  
17801-78020  
SAKURA : A1177

HINO DUTRO  
TOYOTA DYNA



AIRE

17801-3390

OEM:  
17801-3390  
SAKURA : A1330

HINO 500  
GD GH 2004  
(Prim. SA1325)  
Air Sec.



AIRE

17801-78110

OEM:  
17801-78110  
SAKURA : A13570

HINO 300  
EURO 4 2014



ACEITE

1-13240109-1

OEM:  
1-13240109-1  
HINO: 15607 1521  
SAKURA: O1301

HINO, NISSAN, ISUZU



ACEITE

15607-1330

OEM:  
15607 1330  
SAKURA: C1302

HINO FB FC  
TOYO  
MITS CANTER  
(M 26 X 1.5)



ACEITE

15607-2190

OEM:  
15607-2190  
SAKURA: C1316  
TOYOTA: S1560-72190

HINO AK 2011



ACEITE

15607-1731

OEM:  
15607-1731  
SAKURA: C1304  
SHOGUN: C012

HINO FB FD FF TURBO



ACEITE

15607-2261

OEM:  
15607-2261  
SAKURA O1325

HINO 700 FS (SEC.)



ACEITE

15607-2280

OEM:  
15607-2280  
SAKURA : 01323

HINO 700 FS (PRIM.)



ACEITE

15607-2051

OEM:  
15607-2051  
SAKURA : C1314

HINO 500, FC



ACEITE

15607-2120

OEM:  
15607-2120  
15607-2180  
SAKURA: C1321

HINO 300 4600



COMBUSTIBLE

23304-78110

OEM :  
23304-78110  
SAKURA : F1110

HINO DUTRO 20  
4.6 (2003-2008)

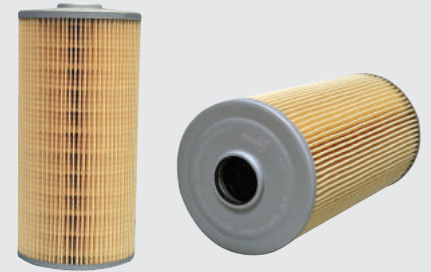


COMBUSTIBLE

23401-1690

OEM :  
23401-1690  
SAKURA : EF1301

HINO SERIE 700  
(2009-2011)



COMBUSTIBLE

2340-11730

OEM :  
2340-11730  
SAKURA : SF1307

HINO 500 SEC



COMBUSTIBLE

1-13240194-0

OEM:  
1-13240194-0  
FLEETGUARD: FF5363  
SAKURA : F1507

HINO 300  
ISUZU FTR FSR FVR



COMBUSTIBLE

23304-78090

OEM :  
23304-78090  
SAKURA : EF13070

HINO 300  
EURO 5 FUEL  
2014



COMBUSTIBLE

23390-78220

OEM :  
23390-78220  
SAKURA : EF1112

HINO DUTRO 4.6  
(2003-2008)



COMBUSTIBLE

23401-1131

OEM:  
23401-1131 -  
SAKURA: FC1302  
SHOGUN: FC033

HINO FB  
DUTRO 4.6

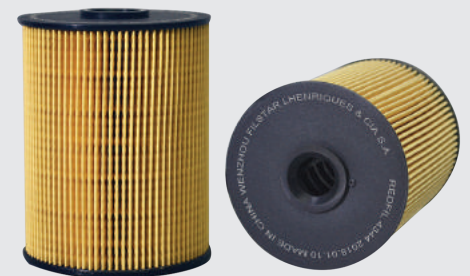


COMBUSTIBLE

2340-11441

OEM:2340-11441  
SAKURA:SFC1306  
MANN:WK1142  
X-RACOR: R60T

HINO GD - GH FUEL



COMBUSTIBLE

23304-EV030

OEM:  
23304-EV030  
SAKURA : EF1802

HINO SEP GD GH 2011  
FUEL



SEPARADOR  
WK1040

OEM:  
74 20 851 191  
MANN : WK1040

HINO - MB/ 1721 -  
CHEV/NHR-NMR



COMBUSTIBLE  
FF5138

OEM:S23401-1510  
BALDWIN: BF7967  
SAKURA: FC1301  
LUBERFINER: LFF3553  
SHOGUN:FC034

HINO FD FF TURBO;  
ISUZU



COMBUSTIBLE  
23304-EV290-HM

OEM:  
23304-EV290

HINO 2017



## JOHN DEERE



SEPARADOR  
PS10974

OEM:  
BALDWIN BF7952D  
JOHN DEERE RE522868  
WIX: 33739  
LUBERFINER : L8141F

JOHN DEERE  
TRACTOR



SEPARADOR  
BF7950D

OEM:  
BALDWIN: BF7950D  
HASTINGS: FF1197D  
JOHN DEERE: RE529643  
LUBERFINER : L8682F

JOHN DEERE 4045  
POWER TECH PLUS



SEPARADOR  
87803445

OEM:  
87803445  
DONALDSSON:P551434  
MANN: WK 8137  
BALDWIN: BF7954-D  
LUBERFINER : L344F

CASE  
INTERNATIONAL,  
JOHN DEERE,  
NEW HOLLAND



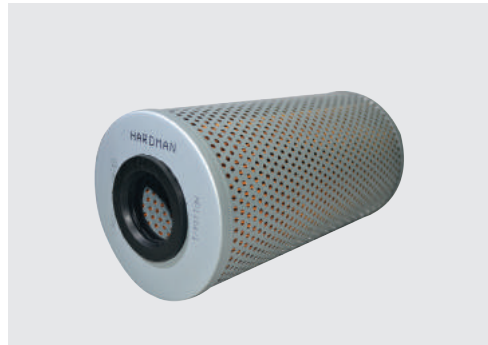
COMBUSTIBLE  
FF5135

OEM:  
DEUTZ: 2133943  
BALDWIN: BF587D  
VOLVO PENTA: 8385932  
SAKURA : FC5715  
LUBERFINER : LFF3504

ATLAS-COPCO;  
DEUTZ, VOLVO  
PENTA ENGINES;  
CASE, DEUTZ,  
JOHN DEERE, NEW  
HOLLAND EQUIPMENT;  
FIAT, M.A.N. Trucks



## KOMATSU®



HIDRAULICO

HD1164/1

OEM:  
4241611140  
FLEETGUARD: HF35255  
BALDWIN: PT510  
SAKURA : H5618

KOMATSU  
SERIE S / PC

## FREIGHTLINER®



SEPARADOR

FS1029W

OEM :  
BALDWIN: PF7680  
SAKURA: SF27010  
LUBER: L5467F

FREIGHTLINER  
ARGOSY/  
KENWORTHW900S/  
CUMMINS/  
D.DIESEL

## KIA

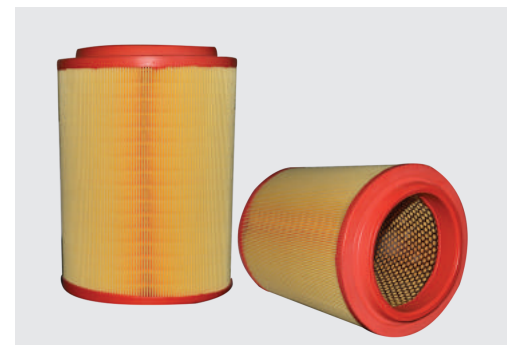


AIRE

28113-4E000

OEM:  
28113-4E000  
SAKURA: A28520  
MANN: C 16 007  
HENGST:E1284L

KIA 2700-2500  
MODERNO

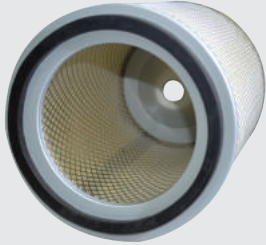


AIRE

28130-5H000

OEM:  
28130-5H000  
28130-5H001  
SAKURA : A2813

KIA HD72- HD65

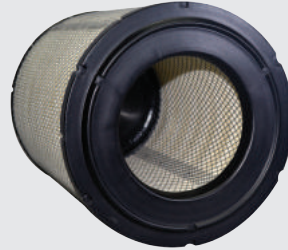


AIRE

5-87310455-0

OEM:  
5-87310455-0  
SAKURA: A6020  
LUBERFINER LAF1800

AIR  
ISUZU NPR NHR NKR  
LAF1800

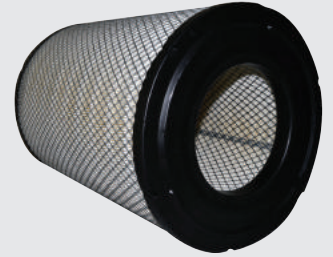


AIRE

8-97062294-0

OEM:  
8-97062294-0  
SAKURA: A6020  
FRAM: CA9856

AIR  
ISUZU NPR 2001

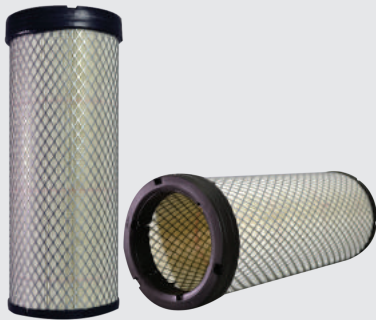


AIRE

8-98071-423-0

OEM:  
8-98071-423-0  
SAKURA: A6036

FTR - FVR PRIM AIR

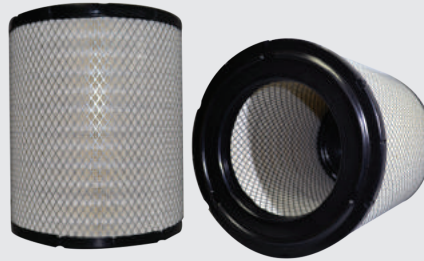


AIRE

8-98071-424-0

OEM:  
8-98071-424-0  
SAKURA: A6037

FTR - FVR  
SECUND AIR

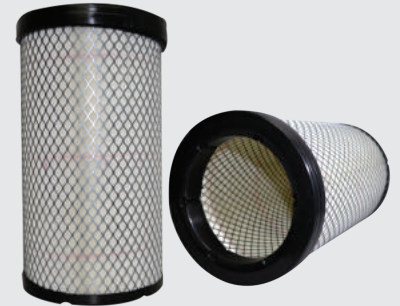


AIRE

AF25131M

OEM:  
DONSSON: DA2639  
BALDWIN: RS3508  
MANN: C 30 899  
SAKURA: A5535

KODIAK /CATERPILLAR  
3126 (AIR PRIMA)



AIRE

AF25132M

OEM:  
DONSSON: DA4639  
SAKURA: A5534

KODIAK  
CATERPILLAR  
3126 (AIR SECUN)



AIRE

AF4878

OEM:  
BALDWIN: RS2863  
DONSSON: DA2547-H  
INO: 17801-3430A  
SAKURA: A5020

KODIAK TAMDEN  
(AIR SEC AF25215)



AIRE

AF25215

OEM:  
DONSSON: DA4547  
SAKURA: A5021

KODIAK TAMDEN  
(AIR PRIM AF4878)





ACEITE

8-94360427-1

OEM:  
8-94360427-1  
SAKURA C1516

CHEV NHR - NKR  
(TODOS) M26 X 1.5



ACEITE

8-97148280-0

OEM:  
8-94338181-0  
GM: 97719921  
SAKURA: C1522

CHEV ISUZU  
NPR OIL



ACEITE

8-94396-375-4

OEM:  
SAKURA: C1513  
ISUZU: 8-94393501  
0/8-97520224-0

ISUZU  
FVR, FTR, FRR



COMBUSTIBLE

8-97172549-0

OEM:  
8-97172549-0  
LUBERFINER FP588F  
SAKURA: FC1505

NPR- NHR



COMBUSTIBLE

8-98092481-1

OEM:  
8-98092481-1  
SAKURA : EF 15130

ISUZU FVR  
2014



COMBUSTIBLE

8981628970

OEM :  
8981628970  
SAKURA : EF1509

CHEV- NMR FUEL



### Mercedes-Benz



ACEITE

W1168/5

OEM:  
A0031843301  
TECFIL:PSL301

MERCEDES BENZ  
1721 /  
MB 1318 ECOLOG



SEPARADOR

R120T

OEM:  
MANN: WK1175X  
BALDWIN: BF1395-0  
LUBERFINER : LFF8707

SEPARADOR SPIN ON  
RACOR

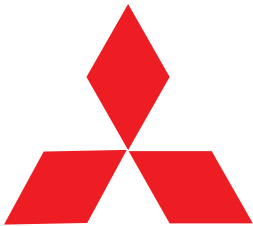


SECADOR DE AIRE

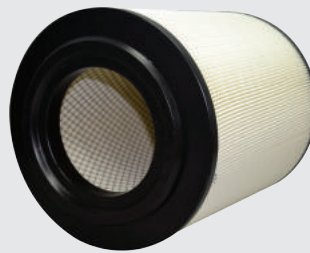
TB1374X

OEM:  
CATERPILLAR 2032389  
IVECO 2992261  
FORD 4C452A131AA  
GENERAL MOTORS  
89040662  
HENGST T250W  
MANN & HUMMEL TB1374x

FREIGHTLINER, IHC,  
IVECO, KENWORTH,  
MACK, M.A.N.,  
MERCEDES-BENZ,  
PETERBILT, R.V.I.,  
STERLING,  
VOLVO TRUCKS



### MITSUBISHI



AIRE

ME017246

OEM:  
ME017246  
SAKURA: A1093  
FRAM: CA9245

MITSUBISHI  
CANTER / ROSA



COMBUSTIBLE

ME 006066

OEM:  
ME006066  
SAKURA: FC 1016  
SHOGUN: FC351

MITSUBISHI FUSO  
CANTER / ROSA



COMBUSTIBLE

ME 016823

OEM:  
ME016823  
SAKURA : FC1020  
SHOGUN: FC352

MITSUBISHI FUSO  
CANTER / ROSA



COMBUSTIBLE

ME035393

OEM:  
ME035393  
SAKURA:FC5505  
FC10280  
SHOGUN:FC353

MITSUBISHI FUSO  
CANTER - ROSA  
FUSO FM - FUSO FN  
(1995-->1999)



ACEITE

PH49A

OEM: 1R0739  
FRAM PH49A  
LUBERFINER LFP3191  
FLEETGUARD LF667  
SAKURA: C5501

MACK



COMBUSTIBLE

483GB470M

OEM:  
MACK: 483GB470M  
BALDWIN: BF7656  
FLEETGUARD: FF5381  
LFF4470

MACK / GRANITE



REFRIGERANTE

WF2022

OEM:  
LUBER FINER: LFW4422  
BALDWIN BW5179  
GMC 25010921  
Mack 25MF418

MACK EM7 / EC6-265



REFRIGERANTE

WF2015

OEM:  
GMC 6439296  
Mack 25MF428  
25MF428-A  
White 27-077522  
LUBERFINER : LFW4860

MACK VARIOS



ACEITE

PH3786

OEM:  
1814562C1  
FRAM PH3786  
LUBERFINER: LFP2286  
SAKURA: C5002

INTERNATIONAL



SEPARADOR

WK1060/3

OEM:  
SAKURA.  
SFC7912-30  
RACOR-R90P

YUTONG - IVECO  
EURO



## JAC



ACEITE

LF654

OEM:  
BALDWIN: BT364  
CAT: 1R0734  
SAKURA: C5504

JAC 1035



ACEITE

JX0814D-HM

OEM:  
JX0814D

CAMIONES JAC



SEPARADOR

FS1251

OEM:  
MANN: WK 716/2X  
BALDWIN: BF1226  
LUBER: LFF8062  
SAKURA: SFC5708

JAC 1035  
CUMMINS 4BTA / ISB  
5.9 KOMATSU PC  
DEUTZ D780XX



SEPARADOR

WK 850/3

OEM:  
CATERPILLAR:  
1R051/1R0759  
BALDWIN: BF7632  
FLEETGUARD: FF5321  
SAKURA: FC5504

CATERPILLAR  
ENGINES



SEPARADOR

FS19555

OEM:  
BALDWIN: BF7679D  
LUBERFINER : L8682F  
FS19555  
HASTINGS: FF1098D  
CATERPILLAR: 1174089  
JOHN DEERE: RE62424

CATERPILLAR, JOHN  
DEERE EQUIPMENT



HIDRAULICO

HF6555

OEM:  
CASE D94236  
CATERPILLAR 9T5916  
FIAT 73144499  
MANN WH980  
JOHN DEERE RE34958  
LUBERFINER : LFH4910  
Sakura : HC5508

CASE, CASE-  
INTERNATIONAL,  
CATERPILLAR,  
DAEWOO, FIAT-ALLIS,  
JOHN DEERE, NEW  
HOLLAND,  
STEIGER



COMBUSTIBLE

FF185

OEM:  
MANN : WK 950/3  
SAKURA: FC5501  
LUBERFINER: LFP440F  
CAT: 1P2299, 6L7440

CASE IH /  
CATERPILLAR D5 /  
FREIGHTLINER  
CENTURY



**ACEITE**  
**LF3000**  
OEM:  
6742-01-4120  
SAKURA : C5723  
LUBERFINER LFP3000

**CUMMINS**



**ACEITE**  
**LF9080**  
OEM:  
2882674  
SAKURA: C5710  
LUBERFINER LFP9001

**CUMMINS MODERNO OIL**



**ACEITE**  
**LF3345**  
OEM:  
BALDWIN: BT427  
CUMMINS: 3903224  
MANN: W940/30  
SAKURA: C5703

**BOMAG, CASE (CUMMINS 4BT3.9) JAC 1063 MOD.2009 CUMMINS 6BT 5.9 L**



**COMBUSTIBLE**  
**FF105**  
OEM:  
3315844  
BALDWIN: BF957  
LUBERFINER: LFF5

**CUMMINS-KTA-19C--/ CUMMINS-LTA10**



**SEPARADOR**  
**FS1040**  
OEM:  
BALDWIN: BF1277SPS  
SAKURA: SFC5521  
LUBER: LFF1007

**CUMMINS QSX15**



**SEPARADOR**  
**FS1242**  
OEM:  
BALDWIN BF1249-0  
LUBERFINER: LFF9013

**FREIGHTLINER, INTERNATIONAL BUSES, CUMMINS ENGINES**



**SEPARADOR**  
**FS1280**  
OEM:  
SAKURA: SFC5706  
BALDWIN: FS1280  
LUBER: LFF3417

**YUTONG CUMMINS 4BT3.9/ 4B3.9-/ 6BT5.9-/ 6BT5.9/ BOMAG - CASE**



**COMBUSTIBLE**  
**FF213**  
OEM:  
CUMMINS: 3300901  
LUBER: G6378

**ALLIS CHALMER, TAYLOR, VERSATILE EQUIPMENT; CUMMINS ENGINES**



**COMBUSTIBLE**  
**P4102**  
OEM:  
BALDWIN: BF988  
LUBERFINER: FP586F  
SAKURA: FC7101  
FG: FF42000/FF5018/  
FF5461  
VOLVO 243004

**CUMMINS**





REFRIGERANTE

WF2126

OEM:  
CUMMINS 3680433  
FLEETGUARD WF2126  
BALDWIN BW5086  
LFW2126

CUMMINS QSX15



SEPARADOR

FS1212

OEM:  
CUMMINS: 3308638  
LUBERFINER: LFF8020  
SAKURA : SFC5705

ATLAS-COPCO,  
BOMAG, CASE



SEPARADOR

P551329

OEM:  
CUMMINS: 3925274  
LUBERFINER : LFF3417  
SFC5706

ALLIS-CHALMERS,  
CASE, CASE-IH,  
CUMMINS ENGINE



ACEITE

W962

OEM:  
905411880008  
VW: 03873022  
ZF:0070131262  
TECFIL: PSL962

VOLKSWAGEN  
13170 / 15170 /  
7110 / 9150  
MOTO MWM  
DONG FENG  
510 / 610 / 914 /  
1014 / 1214



AIRE

CA3291

OEM:  
A 002 094 00 04  
FRAM -CA329  
MANN : C 20 325/2  
TECFIL: AP9834

VW 17210 BUSES

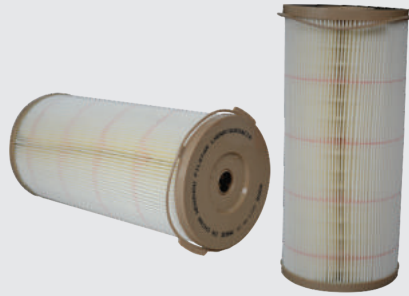


COMBUSTIBLE

2010 PM

OEM:  
PARKER: 2010TM  
SAKURA: SF1911/30

ELEMENTO TURBINA  
500FG



COMBUSTIBLE

2020 TM

OEM:  
PARKER: 2020TM  
SAKURA: SF1912/10

ELEMENTO  
TURBINA 1000 FG



COMBUSTIBLE

2040 TM

OEM:  
PARKER: 2040TM  
SAKURA: SF1913/10

ELEMENTO TURBINA  
900FG



COMBUSTIBLE

DAHL201

OEM:  
DAHL 201

ELEMENTO TURBINA  
DAHL201



COMBUSTIBLE

CAV796

OEM:  
7111-796  
DELPHI: HDF796  
CAV:796

ELEMENTO  
TRACTORESS MASSEY  
FERGUSON - NEW  
HOLLAND  
CLARK



COMBUSTIBLE

DAHL101

OEM:  
DAHL 101

ELEMENTO  
TURBINA  
DAHL101



COMBUSTIBLE

CAV296

OEM:7111-296  
DELPHI: HDF296  
CAV:296  
WIX 31666  
FLEETGUARD: FF167A

ELEMENTO MOTORES  
DIESEL FORD  
MASSEY FERGUSON  
GM - VOLKSWAGEN



SEPARADOR

FS19816

OEM:  
WFB1260A  
DONGFENG:16400GT301  
BALDWIN BF9818  
SAKURA : SFC55220

GUANGXI LIUGONG  
MACHINERY,  
KING LONG,  
SANY  
HEAVY INDUSTRY



# CROSS REFERENCE

Number part	CROSS REFERENCE	tipo de filtro	modelo	función	ALTURA h1/h2	DIÁMETRO EXTERIOR	DIÁMETRO INTERIOR	EMPAQUE INT/EXT	ROSCA
1-13240109-1-HM	OEM: 1-13240109-1 - HINO: 156071521 - SAKURA: O1301	Aceite	Elemento	Flujo Pleno	H1: 165 mm	1: 104 mm	1: 49 mm 2: 15 mm	---	---
15607-1330-HM	OEM:156071330 - SAKURA: C1302	Aceite	Spin-On	Flujo Pleno	H1: 150 mm	1: 102 mm	---	INT: 65 mm EXT: 72 mm	M26X1.5-6H
15607-1731-HM	OEM:15607-1731 - SAKURA: C1304 - SHOGUN: C012 <a href="#">Info: Con Tuerca de Drenaje y tubo central</a>	Aceite	Spin-On	Combinación	H1: 199mm	1:110mm	---	INT: 94 mm EXT: 105 mm	1 1/2-16 UN-2B
15607-2051-HM	OEM: 15607-2051 - SAKURA : C1314	Aceite	Spin-On	Flujo Pleno	H1: 199 mm	1: 118 mm	---	---	1 1/2-16 UN-2B
15607-2120-HM	OEM:15607-2120 - 15607-2180 - SAKURA: C1321 <a href="#">Info: Con Tuerca de Drenaje</a>	Aceite	Spin-On	Combinación	H1: 150 mm	1: 102 mm	---	INT: 87 mm EXT: 98 mm	1-12 UNF-2B
15607-2190-HM	OEM:15607-2190 - SAKURA: C1316 - TOYOTA: S1560-72190	Aceite	Spin-On	Combinación	H1: 210 mm	1: 120 mm	---	INT: 98 mm EXT: 114 mm	1 1/2-16 UN-2B
15607-2261-HM	OEM:15607-2261 - SAKURA O1325	Aceite	Elemento	Flujo Pleno	H1: 186 mm	1: 103 mm	1: 15 mm 2: 49 mm	---	---
15607-2280-HM	OEM:15607-2280 - SAKURA : 01323	Aceite	Elemento	By Pass	H1: 226 mm	1: 140 mm	1: 17 mm	---	---
8-94360427-1-HM	OEM: 8-94360427-1 - SAKURA C1516	Aceite	Spin-On	Combinación	H1: 125 mm	1: 90 mm	---	INT: 75 mm EXT: 86 mm	M26X1.5-6H



# CROSS REFERENCE

Number part	CROSS REFERENCE	tipo de filtro	modelo	función	ALTURA h1/h2	DIÁMETRO EXTERIOR	DIÁMETRO INTERIOR	EMPAQUE INT/EXT	ROSCA
8-94396-375-4	OEM:SAKURA: C1513 - ISUZU: 8-94393501-0/8-97520224-0	Aceite	Spin-On	Combinación	H1: 210 mm	---	---	INT: 98 mm EXT: 114 mm	1 1/2-12 UNF-2B
8-97148280-0	OEM: 8-94338181-0 - GM: 97719921 - SAKURA: C1522	Aceite	Spin-On	Combinación	H1: 150 mm	1: 120 mm	---	INT: 106 mm EXT: 116 mm	1 1/2-12 UNF-2B
JX0814D-HM	OEM: JX0814D	Aceite	Spin-On		H1: 160 mm	2: 95 mm	---	INT: 70 mm EXT: 60 mm	M24X2-6H
LF3000-HM	OEM: 6742-01-4120 - SAKURA : C5723 - LUBERFINER LFP3000	Aceite	Spin-On	Combinación	H1: 280 mm	1: 121 mm	---	---	2 1/4-12 UNF-2B
LF3345	OEM:BALDWIN: BT427 - CUMMINS: 3903224'MANN: W940/30 - SAKURA: C5703	Aceite	Spin-On	Flujo Pleno	H1: 136 mm	1: 93 mm	---	INT: 62 mm EXT: 70 mm	1-16 UNF-2B
LF654	OEM: BALDWIN: BT364 - CAT: 1R0734 - SAKURA: C5504	Aceite	Spin-On	Flujo Pleno	H1: 143 mm	1: 93 mm	---	INT: 63 mm EXT: 71 mm	1-12 UNF-2B
LF9080-HM	OEM: 2882674 - SAKURA : C5710 - LUBERFINER LFP9001	Aceite	Spin-On	Combinación	H1: 299 mm	1: 118 mm	---	---	M95X2.5-7H
PH3786-HM	OEM: 1814562C1 - FRAM PH3786 - LUBERFINER: LFP2286 - SAKURA: C5002	Aceite	Spin-On	Flujo Pleno	H1: 181 mm	1: 108 mm	---	INT: 89 mm EXT: 99 mm	1 1/2-16 UN-2B
PH49A-HM	OEM : 1R0739 - FRAM PH49A - LUBERFINER LFP3191 - FLEETGUARD LF667 - SAKURA: C5501	Aceite	Spin-On	Flujo Pleno	H1: 262 mm	1: 108 mm	---	INT: 92 mm EXT: 102 mm	1 1/8-16 UNF-2B



# CROSS REFERENCE

Number part	CROSS REFERENCE	tipo de filtro	modelo	función	ALTURA h1/h2	DIÁMETRO EXTERIOR	DIÁMETRO INTERIOR	EMPAQUE INT/EXT	ROSCA
W1168/5	OEM: A0031843301 - TECFIL:PSL301	Aceite	Spin-On	---	H1: 182 mm	1: 110 mm	---	---	1" x 12UNF-2B
W962	OEM:905411880008 - VW: 03873022 - ZF:0070131262 - TECFIL: PSL962	Aceite	Spin-On	---	H1: 209 mm	1: 93 mm	---	---	1" x 12UNF-2B
16546-9106-HM	OEM: 16546-9106 - SAKURA A6119M <a href="#">Info: Sello final poliuretano</a>	Aire	Elemento	Primario	H1: 374 mm H2: 361 mm	1: 277 mm 2: 277 mm	1: 174 mm	---	---
16546-Z9101-HM	OEM: 16546-Z9101 - SAKURA : A6120 <a href="#">Info: Sello final poliuretano</a>	Aire	Radial	Seguridad	H1: 357 mm H2: 355 mm	1: 173 mm 2: 167 mm	1: 128 mm	---	---
17720-3640-HM	OEM : 17720-3640 - SAKURA : A1313 <a href="#">Info: Sello final Tapas Metal</a>	Aire	Metal	Primario	H1: 470 mm H2: 457 mm	1: 232 mm 2: 232 mm	1: 147 mm 2: 23 mm	---	---
17801-2460	OEM: 17801-2460 - SAKURA 1307 <a href="#">Info: Sello final Tapas Metal</a>	Aire	Metal	Seguridad	H1: 445 mm H2: 432 mm	1: 145 mm 2: 145 mm	1: 117 mm 2: 23 mm	---	---
17801-3380-HM	OEM : 17801-3380 17801-EW010 - SAKURA : A1325 <a href="#">Info: Sello final poliuretano</a>	Aire	Radial	Primario	H1: 438 mm H2: 413 mm	1: 228 mm 2: 228 mm	1: 115	---	---
17801-3390-HM	OEM : 17801-3390 - SAKURA : A1330 <a href="#">Info: Sello final poliuretano</a>	Aire	Radial	Seguridad	H1: 428 mm H2: 420 mm	1: 110 mm 2: 102 mm	1: 81	---	---
17801-78020-HM	OEM : 17801-78020 - SAKURA : A1177 <a href="#">Info: Sello final poliuretano</a>	Aire	Radial	Principal	H1: 263mm H2: 250 mm	1: 237 mm 2: 237 mm	1: 132	INT:99 / 88	--





# CROSS REFERENCE

Number part	CROSS REFERENCE	tipo de filtro	modelo	función	ALTURA h1/h2	DIÁMETRO EXTERIOR	DIÁMETRO INTERIOR	EMPAQUE INT/EXT	ROSCA
17801-78110-HM	OEM : 17801-78110 - SAKURA : A13570 <a href="#">Info:</a> Sello final poliuretano	Aire	Radial	Principal	H1: 216 mm H2: 203 mm	1: 237 mm 2: 237 mm	1: 132	---	---
28113-4E000-HM	OEM: 28113-4E000 - SAKURA : A28520 - MANN : C 16 007 - HENGST : E1284L <a href="#">Info:</a> Sello final poliuretano	Aire	Radial	Principal	H1: 266 mm H2: 246 mm	1: 165 mm 2: 165 mm	1: 110 2: 110 mm	---	---
28130-5H000-HM	OEM : 28130-5H000 -28130-5H001 - SAKURA : A2813 <a href="#">Info:</a> Sello final poliuretano	Aire	Radial	Principal	H1: 290 mm H2: 263 mm	1: 198 mm 2: 198 mm	1: 129 2: 129 mm	---	----
5-87310455-0-HM	OEM : 5-87310455-0 - SAKURA : A6020 - LUBERFINER LAF1800 <a href="#">Info:</a> Sello final Tapas Metal	Aire	Metal	Principal	H1: 267 mm H2: 254 mm	1: 202 mm 2: 202 mm	1: 136 2: 23 mm	---	---
8-97062294-0-HM	OEM : 8-97062294-0 - SAKURA : A6020 - FRAM : CA9856 <a href="#">Info:</a> Sello final poliuretano	Aire	Radial	Principal	H1: 291 mm H2: 298 mm	1: 237 mm 2: 237 mm	1: 132	---	---
8-98071-423-0-HM	OEM : 8-98071-423-0 - SAKURA : A6036 <a href="#">Info:</a> Sello final poliuretano	Aire	Radial	Primario	H1: 392 mm H2: 380 mm	1: 280 mm 2: 280 mm	1: 148	---	---
8-98071-424-0-HM	OEM: 8-98071-424-0 - SAKURA : A6037 <a href="#">Info:</a> Sello final poliuretano	Aire	Radial	Seguridad	H1: 377 mm H2: 371 mm	1: 150 mm 2: 141 mm	1: 109	---	---
AF25131M	OEM : DONSSON: DA2639 - BALDWIN: RS3508 - MANN: C 30 899 - SAKURA: A5535 <a href="#">Info:</a> Sello final poliuretano	Aire	Radial	Primario	H1: 342 mm H2: 330 mm	1: 292 mm 2: 292 mm	1: 183	---	--
AF25132M	OEM : DONSSON: DA4639 - SAKURA: A5534 <a href="#">Info:</a> Sello final poliuretano	Aire	Radial	Seguridad	H1: 334 mm	1: 186 mm 2: 177 mm	1: 131	---	----



# CROSS REFERENCE

Number part	CROSS REFERENCE	tipo de filtro	modelo	función	ALTURA h1/h2	DIÁMETRO EXTERIOR	DIÁMETRO INTERIOR	EMPAQUE INT/EXT	ROSCA
AF25215	OEM : DONSSON: DA4547 - SAKURA: A5021 <a href="#">Info:</a> Sello final poliuretano	Aire	Radial	Seguridad	H1: 306 mm H2: 300 mm	1: 134 mm 2: 125 mm	1: 96	---	---
AF4878	OEM: BALDWIN: RS2863 - DONSSON: DA2547 - HINO: 17801-3430A - SAKURA: A5020 <a href="#">Info:</a> Sello final poliuretano	Aire	Radial	Primario	H1: 325 mm H2: 312 mm	1: 237 mm 2: 237 mm	1: 132	---	---
CA3291-HM	OEM: A 002 094 00 04 - FRAM -CA3291 - MANN : C 20 325/2 - TECFIL: AP9834 <a href="#">Info:</a> Sello final poliuretano	Aire	Metal	Principal	H1: 376 mm H2: 376 mm	1: 197 mm 2: 197 mm	1: 105 2: 9 mm	----	---
ME017246-HM	OEM: ME017246 - SAKURA : A1093 - FRAM : CA9245 <a href="#">Info:</a> Sello final poliuretano	Aire	Radial	Principal	H1: 282 mm H2: 267 mm	1: 230 mm 2: 230 mm	1: 117	---	---
1-13240194-0-HM	OEM : 1-13240194-0 FLEETGUARD: FF5363 - SAKURA : F1507 <a href="#">Info:</a> Sello final Tapas de Metal	Combustible	Elemento	Primario	H1: 99 mm H2: 95 mm	1: 95 mm 2: 95 mm	1: 27	---	---
2010 PM-HM	OEM: PARKER: 2010TM - SAKURA: SF1911/30 <a href="#">Info:</a> Eco	Combustible	Elemento	Separador	H1: 70 mm	1: 78 mm 2: 90 mm	1: 17 1: 17 mm	---	---
2020 TM-HM	OEM : PARKER: 2020TM - SAKURA: SF1912/10 <a href="#">Info:</a> Eco	Combustible	Elemento	Separador	H1: 244 mm	1: 111 mm 2: 128 mm	1: 17 2: 21 mm	---	---
2040 TM-HM	OEM : PARKER: 2040TM - SAKURA: SF1913/10 <a href="#">Info:</a> Eco	Combustible	Elemento	Separador	H1: 120 mm	1: 111 mm 2: 128 mm	1: 17 2: 21 mm	----	---
23304-78090-HM	OEM : 23304-78090 - SAKURA :EF13070 <a href="#">Info:</a> Eco	Combustible	Elemento	Primario	H1: 146 mm H2: 112 mm	1: 84 mm 2: 78 mm	1: 12	----	---



# CROSS REFERENCE

Number part	CROSS REFERENCE	tipo de filtro	modelo	función	ALTURA h1/h2	DIÁMETRO EXTERIOR	DIÁMETRO INTERIOR	EMPAQUE INT/EXT	ROSCA
23304-78110-HM	OEM : 23304-78110 - SAKURA : F1110 <a href="#">Info: Eco</a>	Combustible	Elemento	Primario	H1: 111mm H2: 103 mm	1: 105 mm 2: 93 mm	1: 29 2: 29 mm	---	---
23304-EV030-HM	OEM : 23304-EV030 - SAKURA : EF1802 <a href="#">Info: Eco</a>	Combustible	Elemento	Primario	H1: 116 mm H2: 110 mm	1: 90 mm 2: 90 mm	1: 19 2: 19 mm	---	---
23304-EV290-HM	OEM: 23304-EV290 <a href="#">Info: Eco</a>	Combustible	Elemento	Separador	---	---	---	---	---
23390-78220-HM	OEM : 23390-78220 - SAKURA : EF1112 <a href="#">Info: Eco</a>	Combustible	Elemento	Primario	H1: 91 mm H2: 69 mm	1: 84 mm 2: 78 mm	1: 21 2: 12 mm	---	--
2340-11441-HM	OEM : 2340-11441 - SAKURA : SFC 1306 - MANN : WK 1142 X - RACOR : R60T <a href="#">Info: Tazon colector no incluido</a>	Combustible	Spin-On	Separador	H1: 117 mm	1: 108 mm	---	INT: 80 mm EXT: 90 mm	1-14 UNS-2B R.INF: 3"3/4-10 2B
2340-11730-HM	OEM : 2340-11730 - SAKURA : SF1307 <a href="#">Info: Sello final Tapas Metal</a>	Combustible	Elemento	Separador	H1: 193 mm H2: 189 mm	1: 95 mm 2: 95 mm	1: 27.3	---	---
23401-1131-HM	OEM : 23401-1131 - SAKURA : FC1302 - SHOGUN: FC033	Combustible	Spin-On	Primario	H1: 75 mm H2: 80 mm	---	---	INT: 58 mm EXT: 62 mm	M20X1.5-6H
483GB470M	OEM MACK: 483GB470M - BALDWIN: BF7656 - FLEETGUARD: FF5381 - LFF4470	Combustible	Spin-On	Primario	H1: 200 mm	1: 107 mm	---	---	M22 x 1.5-6H Thd
8-97172549-0-HM	OEM : 8-97172549-0 - LUBERFINER FP588F - SAKURA : FC1505	Combustible	Spin-On	Primario	H1: 75 mm H2: 80 mm	2: 76 mm	---	INT: 58 mm EXT: 62 mm	3/4-16 UNF-2B



# CROSS REFERENCE

Number part	CROSS REFERENCE	tipo de filtro	modelo	función	ALTURA h1/h2	DIÁMETRO EXTERIOR	DIÁMETRO INTERIOR	EMPAQUE INT/EXT	ROSCA
8-98092481-1-HM	OEM : 8-98092481-1 - SAKURA : EF 15130 <a href="#">Info:</a> Eco	Combustible	Elemento	Primario	H1: 193 mm H2: 188 mm	1: 101 mm 2: 101 mm	1: 20.5	----	----
8981628970-HM	OEM : 8981628970 - SAKURA : EF1509 <a href="#">Info:</a> Eco	Combustible	Elemento	Primario	H1: 115 mm H2: 96 mm	1: 100 mm 2: 90 mm	1: 11.75	---	---
BF7950D	OEM: HASTINGS: FF1197D - JOHN DEERE: RE529643 - LUBERFINER : L8682F <a href="#">Info:</a> Snap-lock Separador agua	Combustible	Snap-Lock	Separador	H1: 195 mm	1: 89 mm	1: 29	----	----
23401-1690-HM	OEM : 23401-1690 - SAKURA : EF1301 <a href="#">Info:</a> Eco	Combustible	Elemento	---	H1: 137 mm H2: 131 mm	1: 91mm 2: 91 mm	1: 19 1: 19 mm	---	---
CAV296	OEM:7111-296 - DELPHI: HDF296 - CAV:296 - WIX 31666 - FLEETGUARD: FF167A	Combustible	Elemento	Separador	---	---	---	---	---
CAV796	OEM:7111-796 - DELPHI: HDF796 - CAV:796	Combustible	Elemento	Separador	---	----	---	---	----
DAHL101	OEM : OEM:DAHL 101	Combustible	Elemento	Separador	H1: 59 mm	1: 107 mm	1: 43	---	---
DAHL201	OEM : DAHL 201 - FLEETGUARD: FS1279	Combustible	Elemento	Separador	H1: 114 mm	1: 156 mm	1: 83	---	--
FF105	OEM : 3315844 - BALDWIN: BF957 - LUBERFINER: LFF5 <a href="#">Info:</a> Version corta del FF213	Combustible	Spin-On	Primario	H1: 135 mm	1: 93 mm	---	1: 62 mm 2: 70 mm	1-14 UNS-2B



# CROSS REFERENCE

Number part	CROSS REFERENCE	tipo de filtro	modelo	función	ALTURA h1/h2	DIÁMETRO EXTERIOR	DIÁMETRO INTERIOR	EMPAQUE INT/EXT	ROSCA
FF185-HM	OEM :MANN : WK 950/3 - SAKURA: FC5501 - LUBERFINER: LFP440F - CAT: 1P2299, 6L7440	Combustible	Spin-On	Primario	H1: 174 mm	1: 93 mm	---	INT: 59 EXT: 69	1-14 UNS-2B
FF213	OEM: CUMMINS: 3300901 - LUBER: G6378 <a href="#">Info: Version larga del FF105</a>	Combustible	Spin-On	Primario	H1: 174 mm	1: 93 mm	---	INT: 62 mm EXT: 70 mm	1-14 UNS-2B
FF5135	OEM : DEUTZ: 2133943 - BALDWIN: BF587D - VOLVO PENTA: 8385932 - SAKURA : FC5715 - LUBERFINER : LFF3504 <a href="#">Info: Con Drenaje</a>	Combustible	Spin-On	Secundario	H1: 140 mm	1: 77 mm	---	INT: 63 EXT: 75	M16X1.5-6H
FF5138-HM	OEM:S23401-1510 - BALDWIN: BF7967 - SAKURA: FC1301 - LUBERFINER: LFF3553 - SHOGUN:FC034	Combustible	Spin-On	Primario	H1: 102 mm	1: 80 mm	---	INT: 58 mm EXT: 62 mm	3/4-16 UNF-2B
FS1029W	OEM : BALDWIN: PF7680 - SAKURA: SF27010 - LUBER: L5467F	Combustible	Elemento	Separador	H1: 182 mm H2: 174 mm	1: 101 mm 2: 100 mm	1: 17	---	---
FS1040	OEM : BALDWIN: BF1277SPS - SAKURA: SFC5521 - LUBER: LFF1007	Combustible	Spin-On	Separador	H1: 297 mm	1: 119 mm	---	---	M85X2-6H
FS1212	OEM : CUMMINS: 3308638 - LUBERFINER: LFF8020 - SAKURA : SFC5705	Combustible	Spin-On	Separador	H1: 174 mm	1: 93 mm	---	INT: 62 mm EXT: 71 mm	1-14 UNS-2B
FS1242	OEM : BALDWIN BF1249-0 - LUBERFINER: LFF9013 <a href="#">Info: Tazon recolector incorporado</a>	Combustible	Spin-On	Separador	H1: 169 mm H2: 156 mm	1: 93 mm	---	---	1-14 UNS-2B R. Inf: 1 1/4"X10 UNS-2B
FS1251	OEM: MANN: WK 716/2 x - BALDWIN: BF1226 - LUBER: LFF8062 - SAKURA: SFC5708 <a href="#">Info: Con Drenaje</a>	Combustible	Elemento	Separador	H1: 140 mm	1: 76 mm	---	INT: 62 mm EXT: 72 mm	M16X1.5-6H





# CROSS REFERENCE

Number part	CROSS REFERENCE	tipo de filtro	modelo	función	ALTURA h1/h2	DIÁMETRO EXTERIOR	DIÁMETRO INTERIOR	EMPAQUE INT/EXT	ROSCA
FS1280	OEM :SAKURA: SFC5706 - BALDWIN: FS1280 - LUBER: LFF3417 <a href="#">Info: Con Drenaje</a>	Combustible	Spin-On	Separador	H1: 164 mm H2: 134 mm	1: 93 mm 2: 93 mm	---	---	13/16-18 UNF-2B R. INF: M14X2
FS19555	OEM : BALDWIN BF7679D - LUBERFINER : L8682F FS19555 - HASTINGS FF1098D - CATERPILLAR 1174089 - JOHN DEERE RE62424 <a href="#">Info: Snap-lock Separador agua</a>	Combustible	Snap-Lock	Separador	H1: 147 mm	1: 83 mm	1: 17	---	----
FS19816	OEM: WFB1260A - DONGFENG: 16400GT301 BALDWIN BF9818 - SAKURA : SFC55220	Combustible	Spin-On	Separador	H1: 193 mm	1: 118 mm	---	---	1-14 UNS-2B
ME 006066-HM	OEM : ME 006066 - SAKURA : FC 1016 - SHOGUN: FC351	Combustible	Spin-On	Primario	H1: 80 mm	1: 90 mm	---	INT: 58 mm EXT: 66 mm	M20X1.5-6H
ME 016823-HM	OEM : ME 016823 - SAKURA : FC1020 - SHOGUN: FC352	Combustible	Spin-On	Primario	H1: 100 mm	1: 90 mm	---	INT: 58 mm EXT: 66 mm	M20X1.5-6H
ME035393	OEM: ME035393 - SAKURA:FC5505/FC10280- SHOGUN:FC353	Combustible	Spin-On	Primario	H1: 125 mm	1: 93 mm	---	INT: 58 mm EXT: 62 mm	M20X1.5-6H
P4102-HM	BALDWIN: BF988 - LUBERFINER: FP586F - SAKURA: FC7101 - FG: FF42000/FF5018/FF5461 - VOLVO 243004	Combustible	Spin-On	Primario	H1: 121 mm	1: 76 mm	---	INT: 62 mm EXT: 72 mm	M16X1.5-6H
P551329	OEM : CUMMINS: 3925274 - LUBERFINER : LFF3417 - SFC5706	Combustible	Spin-On	Separador	H1: 164 mm H2: 134 mm	1: 93 mm 2: 93 mm	---	INT: 62 mm EXT: 71 mm	13/16-18 UNF-2B R. Inf: M14X2
PS10974	OEM : BALDWIN BF7952D - JOHN DEERE RE522868 - WIX: 33739 - LUBERFINER : L8141F <a href="#">Info: Snap-lock Separador agua</a>	Combustible	Snap-Lock	Separador	H1: 154 mm	1: 88 mm	1: 17	---	----



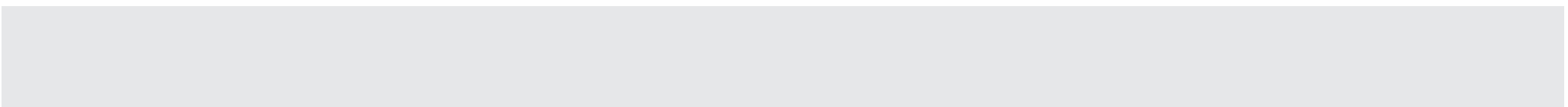
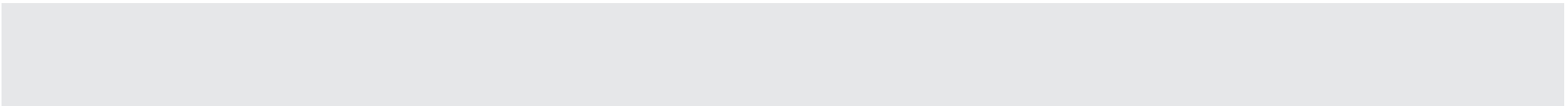
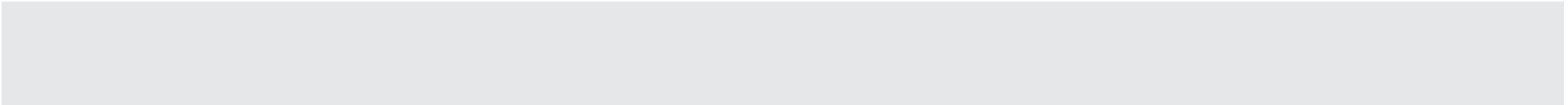
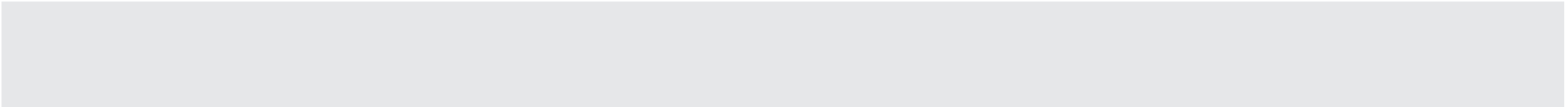
# CROSS REFERENCE

Number part	CROSS REFERENCE	tipo de filtro	modelo	función	ALTURA h1/h2	DIÁMETRO EXTERIOR	DIÁMETRO INTERIOR	EMPAQUE INT/EXT	ROSCA
R120T	OEM: MANN: WK1175X - BALDWIN: BF1395-0 - LUBERFINER : LFF8707 <a href="#">Info:</a> Tazón colector con drenaje	Combustible	Spin-On	Separador	H1: 216 mm	1: 108 mm	---	---	1"-14 UNS Thd
WK 850/3	OEM : CATERPILLAR 1R051/1R0759 - BALDWIN BF7632 - FLEETGUARD FF5321 - SAKURA: FC5504	Combustible	Spin-On	Primario	H1: 174 mm	1: 93 mm	---	INT: 59 mm EXT: 69 mm	7/8-14 UNF-2B
WK1040-HM	OEM :74 20 851 191 - MANN : WK1040 <a href="#">Info:</a> Tazón colector fijo con drenaje	Combustible	Spin-On	Separador	H1: 128 mm	1: 108 mm	---	----	1-14 UNS - 1B
WK1060/3	OEM : SAKURA: SFC7912/30 - RACOR: R90P	Combustible	Spin-On	Separador	H1: 146 mm	1: 108 mm	---	---	1-14 UNS
HD1164/1	OEM: 4241611140 - FLEETGUARD: HF35255 - BALDWIN: PT510 - SAKURA : H5618	Hidraulico	Elemento	Hidraulico	H1: 230 mm H2: 227 mm	1: 110 mm 2: 110 mm	1: 44 mm	---	----
HF6555	Case D94236; Caterpillar 9T5916; Fiat 73144499; MANN WH980; John Deere RE34958 - Luberfiner : LFH4910 Sakura : HC5508	Hidráulico	Spin-On	Hidráulico	H1: 240 mm	1: 95 mm	---	---	1 3/8-12 UNF-2B
WF2015	OEM : GMC 6439296; Mack 25MF428, 25MF428-A; White 27-077522 - LUBERFINER : LFW4860 <a href="#">Info:</a> 8 unidades DCA	Sistema Enfriante	Spin-On	Coolant Filter	H1: 53 mm	1: 38 mm	---	---	3/4"-20 Thd
WF2022	OEM : LUBER FINER: LFW4422 - BALDWIN BW5179 - GMC 25010921; Mack 25MF418 <a href="#">Info:</a> 11 unidades DCA	Sistema Enfriante	Spin-On	Coolant Filter	H1: 144 mm	1: 111 mm	---	----	1"-16 UN-2B
WF2126	OEM : CUMMINS 3680433; FLEETGUARD WF2126 - BALDWIN BW5086 - LFW2126 <a href="#">Info:</a> 8 unidades DCA	Sistema Enfriante	Spin-On	Coolant Filter	H1: 139 mm	1: 95 mm	---	---	M36 x 2.0-6H-SPL



# CROSS REFERENCE

Number part	CROSS REFERENCE	tipo de filtro	modelo	función	ALTURA h1/h2	DIÁMETRO EXTERIOR	DIÁMETRO INTERIOR	EMPAQUE INT/EXT	ROSCA
TB1374X	OEM : Caterpillar 2032389; Iveco 2992261; Ford 4C452A131AA; General Motors 89040662; Hengst T250W; Mann & Hummel TB1374x <a href="#">Info</a> : Para sistemas neumaticos de freno	Secador Frenos	Spin-On	Secador de Aire	H1: 160 mm	1: 136 mm	---	---	M39X1.5-6H







[www.Hardmanfilters.com](http://www.Hardmanfilters.com)